



Steam sterilizers  
**Matachana S1500 I**

# Large capacity Steam Sterilizers

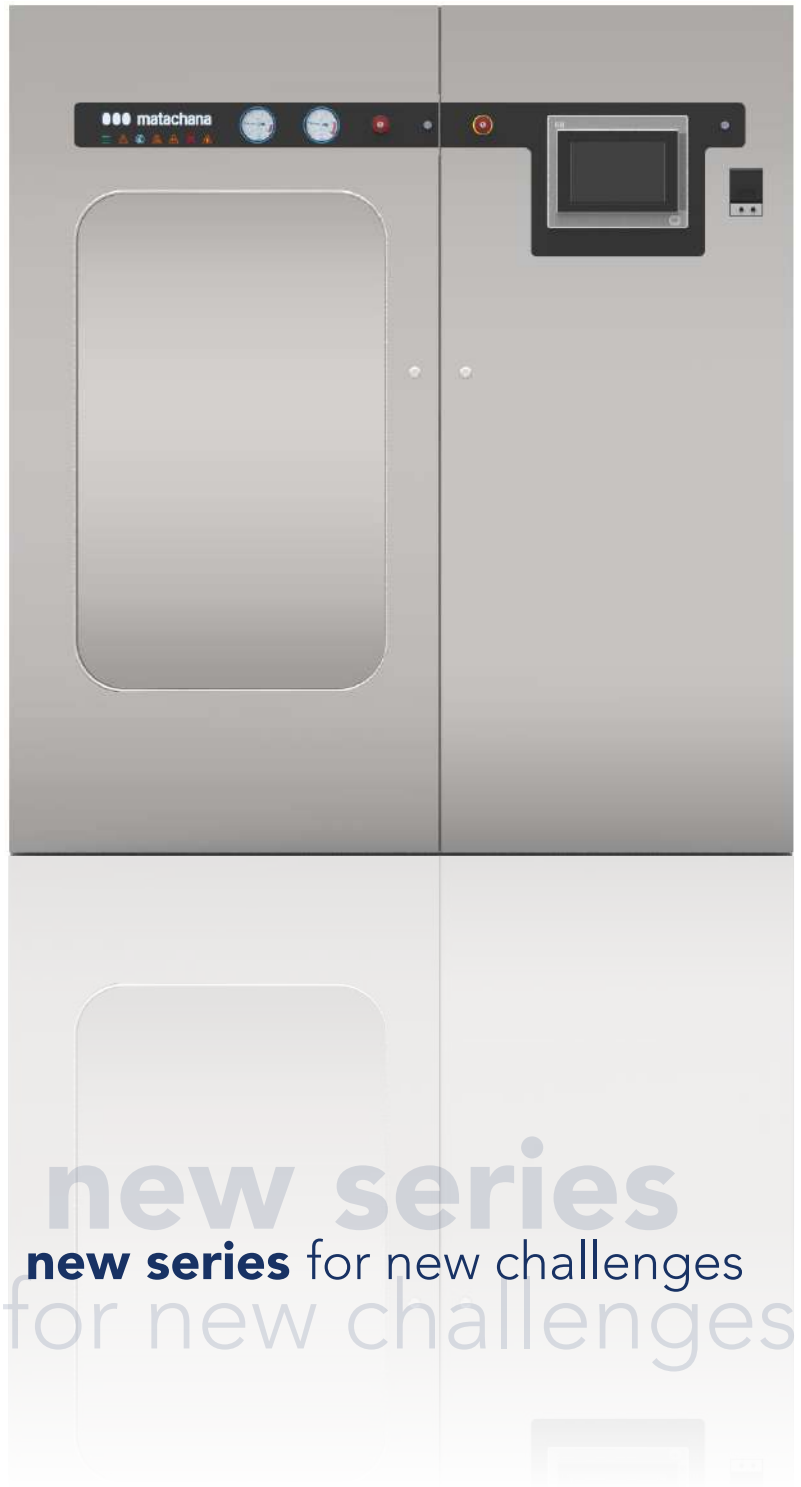
MATACHANA provides the LIFE SCIENCE sector with a wide range of devices whose features are a worldwide reference, both for their quality and their performance. Our aim is to satisfy our customers' expectations and guarantee the durability of our sterilizers.

Steam sterilization in research centers, industry, laboratories and biosafety possesses very particular specifications and requirements. MATACHANA sterilizers are designed to offer high quality equipment and provide maximum performance in this type of centres.

The **S1500 I Series** is a family of devices that complements the line of high-capacity steam sterilizers. These units combine productivity and cost-effectiveness.

As a manufacturer, we adapt the constructive characteristics of our sterilizers to the requirements and operating conditions of our customers.

Our **EXPERIENCE**  
is a **GARANTEE of success**  
for your project



**new series**  
**new series** for new challenges  
for new challenges



# MATACHANA S1500 I Series

## Flexibility, Ergonomics, Eco-efficiency



### FLEXIBILITY

Flexibility in the selection of a wide range of sterilizers with different chamber sizes and volumes, which cover and respond to any specific need of our customers.



### ERGONOMICS

Ergonomics through user-friendly loading systems, facilitating the dynamics and workflow in the different areas whereas providing practical and specific solutions for each project.



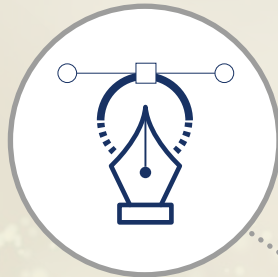
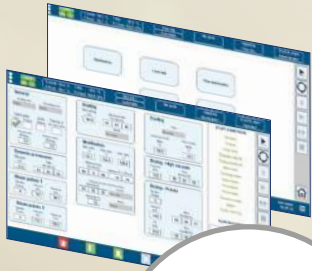
### ECO-EFFICIENCY

Committed to maintenance and environmental protection, the S1500 I sterilizer manufactured with recyclable materials, provides reduced energy consumption, which helps our customers to improve the eco-efficiency of their installation.



Life Science  
Steam sterilizers S1500 I

# Multiple benefits to suit all needs



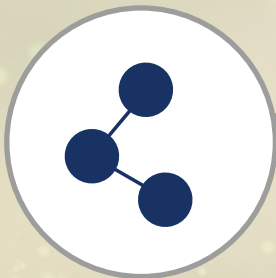
## DESIGN

- New smart, innovative and neat design that facilitates cleaning and conveys robustness; unmistakable characteristics of any MATACHANA equipment
- Stainless steel front with backlit panel and user interface
- Compact design with minimised footprint
  - Designed with carefully selected quality materials



## EASE OF USE

- EasyRUN simple and intuitive user interface with 10.4" HMI control panel with flexible, dynamic control and visualisation technology
- Status of the device visible from a distance thanks to the backlit front panel
  - Easy & quick to learn for users



## CONNECTIVITY

- Possibility of connection via Ethernet or Wifi with remote diagnosis
- Compatible with EasyVIEW® software for equipment and process monitoring
- User interface for configuring reliable OPC and MODBUS connections to connect to the customer's HMI and SCADA, exchanging data in real time



## DOCUMENTATION

- Integrated thermal printer
- USB port for downloading cycle history
- Large capacity internal memory with track record of the last 1000 cycles
- Availability of device's qualification and validation DQ-IQ-OQ-PQ
- Control system option for 21CFR-11 compliance



## EASY MAINTENANCE

- Easily accessible components in the service area
- Front service door (loading area) assembled on EN 1.4301/AISI 304 quality stainless steel panels
- Components and instruments of renown brands that are commonly found on the market
- Surfaces or areas specifically designed to optimise maintenance times and tasks



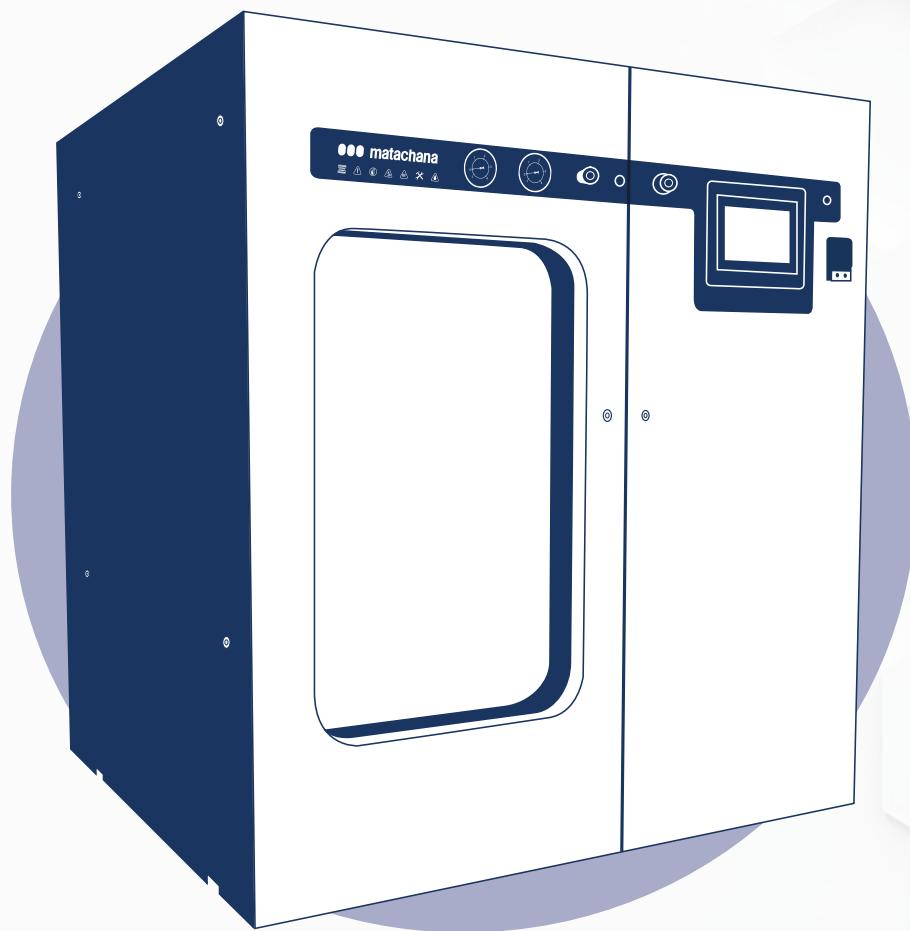
## ECO-FRIENDLY

- Autostart and auto shut-off that allows a more ecological management of the sterilizer's power consumption
- Built-in heat recovery system
- Vacuum system specially designed to reduce water consumption
- Connection to external water recovery systems that reduce up to 99 % of the total water consumption of the device
- Smart power consumption manager

## ERGONOMICS

- Automatic loading and unloading systems available
- Optimised loading and unloading systems for easy handling. Specially designed to operate with bulky and heavy loads
- Sterilizable sealed transport systems that reduce the number of load handling operations

# Technical data S1500 I



EC models	1506V-1I 1506V-2I		1506E-1I 1506E-2I		1509V-1I 1509V-2I		1509E-1I 1509E-2I	
USA models	NA15.600LV-1A NA15.600LV-2A		NA15.600LE-1A NA15.600LE-2A		NA15.800LV-1A NA15.800LV-2A		NA15.800LE-1A NA15.800LE-2A	
Chamber dimensions	mm	in	mm	in	mm	in	mm	in
Width	670	26 3/8	670	26 3/8	670	26 3/8	670	26 3/8
Height	1100	43 1/4	1100	43 1/4	1100	43 1/4	1100	43 1/4
Depth	770	30 3/8	770	30 3/8	1100	43 1/4	1100	43 1/4
Total dimensions	mm	in	mm	in	mm	in	mm	in
Width	1800	70 7/8	1800	70 7/8	1800	70 7/8	1800	70 7/8
Height	2000	78 3/4	2500	98 3/8	2000	78 3/4	2500	98 3/8
Depth	1240	48 7/8	1240	48 7/8	1570	61 3/4	1570	61 3/4
Chamber volume	liters	ft³	literss	ft³	liters	ft³	liters	ft³
	567	20	567	20	810	28.6	810	28.6
Power	kW		kW		kW		kW	
CE models	2		39		2		51	
USA models	3		39		3		51	
Voltage / Frequency	3 ~ / 50-60 Hz				3 ~ / 50-60 Hz			

Remarks: Mod. "V" Mains steam supply, Mod. "E" With built-in steam generator.  
"1" and "2" indicate the number of doors.

# MATACHANA integral solutions

## in Life Science

Projects strongly inspired by our know-how. Perfect blend of **time, experience and quality** to match the wishes and needs of our customers.



1512V-1I 1512V-2I		1512E-1I 1512E-2I		1515V-1I 1515V-2I		1515E-1I 1515E-2I		1518V-1I 1518V-2I		1518E-1I 1518E-2I	
NA15.1000LV-1A NA15.1000LV-2A		NA15.1000LE-1A NA15.1000LE-2A		NA15.1300LV-1A NA15.1300LV-2A		NA15.1300LE-1A NA15.1300LE-2A		NA15.1500LV-1A NA15.1500LV-2A		NA15.1500LE-1A NA15.1500LE-2A	
mm	in	mm	in	mm	in	mm	in	mm	in	mm	in
670	26 3/8	670	26 3/8	670	26 3/8	670	26 3/8	670	26 3/8	670	26 3/8
1100	43 1/4	1100	43 1/4	1100	43 1/4	1100	43 1/4	1100	43 1/4	1100	43 1/4
1430	56 1/4	1430	56 1/4	1760	69 1/4	1760	69 1/4	2090	82 1/4	2090	82 1/4
mm	in	mm	in	mm	in	mm	in	mm	in	mm	in
1800	70 7/8	1800	70 7/8	1800	70 7/8	1800	70 7/8	1800	70 7/8	1800	70 7/8
2000	78 3/4	2500	98 3/8	2000	78 3/4	2500	98 3/8	2000	78 3/4	2500	98 3/8
1900	74 3/4	1900	74 3/4	2230	87 3/4	2230	87 3/4	2560	100 3/4	2560	100 3/4
liters	ft³	liters	ft³	liters	ft³	liters	ft³	liters	ft³	liters	ft³
1054	37.2	1054	37.2	1297	45.8	1297	45.8	1540	54.3	1540	54.3
kW		kW		kW		kW		kW		kW	
3		63		3		63		3		101	
4		65		4		65		4		88	
3 ~ / 50-60 Hz				3 ~ / 50-60 Hz				3 ~ / 50-60 Hz			

Life Science  
Steam sterilizers S1500 I



## Innovation is the way forward

MATACHANA, a family-owned company founded in 1962, is a world leader in the manufacture of steam sterilization equipment, diverse low temperature sterilization technologies, as well as washing and thermodisinfection equipment, providing comprehensive solutions for the Healthcare, Life Science and Pharma sectors.

Since the company's foundation more than 60 years ago, our mission has been to provide the best service, bringing our knowledge and field experience to our customers to facilitate their daily work, allowing them to be efficient in the production whereas keeping rigorously the quality.

MATACHANA has a worldwide presence, with offices based in Spain, France, Germany, Italy, Argentina and Indonesia, or through its distributors in over 120 countries.

We are aware that Training and Service contribute decisively to achieve customer satisfaction. For this reason, we have always invested in the development of these two areas of activity, which enables a direct contact with customers and help us to develop together a continuous improvement process.

### Technical Engineering Support

An assistance provided by engineers, highly skilled expert technicians and support staff, all committed to ensure the proper equipment operation and condition.

### MIEC, training center

As we feel seriously committed and liable for achieving the optimum operation from the MATACHANA equipment, we invest in the training of future users, proposing a service of educational courses to all our customers on a regular basis and in the 5 continents.

### Environmentally friendly

The company counts on 4 production sites in Europe. The devices are designed and manufactured using the latest technologies on the market to achieve the best results in terms of energy savings and reduction in water consumption. Our Production Center located in Castelldefels (Barcelona) complies with the ISO 14001.

### Quality

The MATACHANA devices are developed, manufactured and tested within a strict quality control according to the international Standards ISO 9001 and EN ISO 13485 for the quality management of medical devices.



#### Headquarters

Copèrnic, 8  
08860 Castelldefels,  
Barcelona · Spain  
Tel. (+34) 93 4868700  
[www.matachana.com](http://www.matachana.com)

#### Matachana France

Europarc · 5 allée des Saules  
94043 Créteil Cedex · France  
Tel. (+33) 1 41941780  
[www.matachana.fr](http://www.matachana.fr)

#### Matachana Germany

An der Trave 14  
23923 Selmsdorf · Germany  
Tel. (+49) 451 280720  
[www.matachana.de](http://www.matachana.de)

#### Matachana Italy

Via Berlino, 6 loc. Zingonia  
24040 Verdellino (BG) · Italy  
Tel. (+39) 035 883122  
[www.metalarredinox.eu](http://www.metalarredinox.eu)

#### Matachana Argentina

Lincol 2572 · Villa Maipu,  
(B1650KED) San Martín  
Buenos Aires · Argentina  
Tel. (+54) 11 48390880  
[www.matachana.com](http://www.matachana.com)

#### Matachana Asia Pacific

Revenue Tower · Unit 26-128  
SCBD, Jl. Jend. Sudirman Kav. 52-53  
Jakarta Selatan 12190 · Indonesia  
Tel. (+62) 021 5010 0479  
[www.matachana.com](http://www.matachana.com)